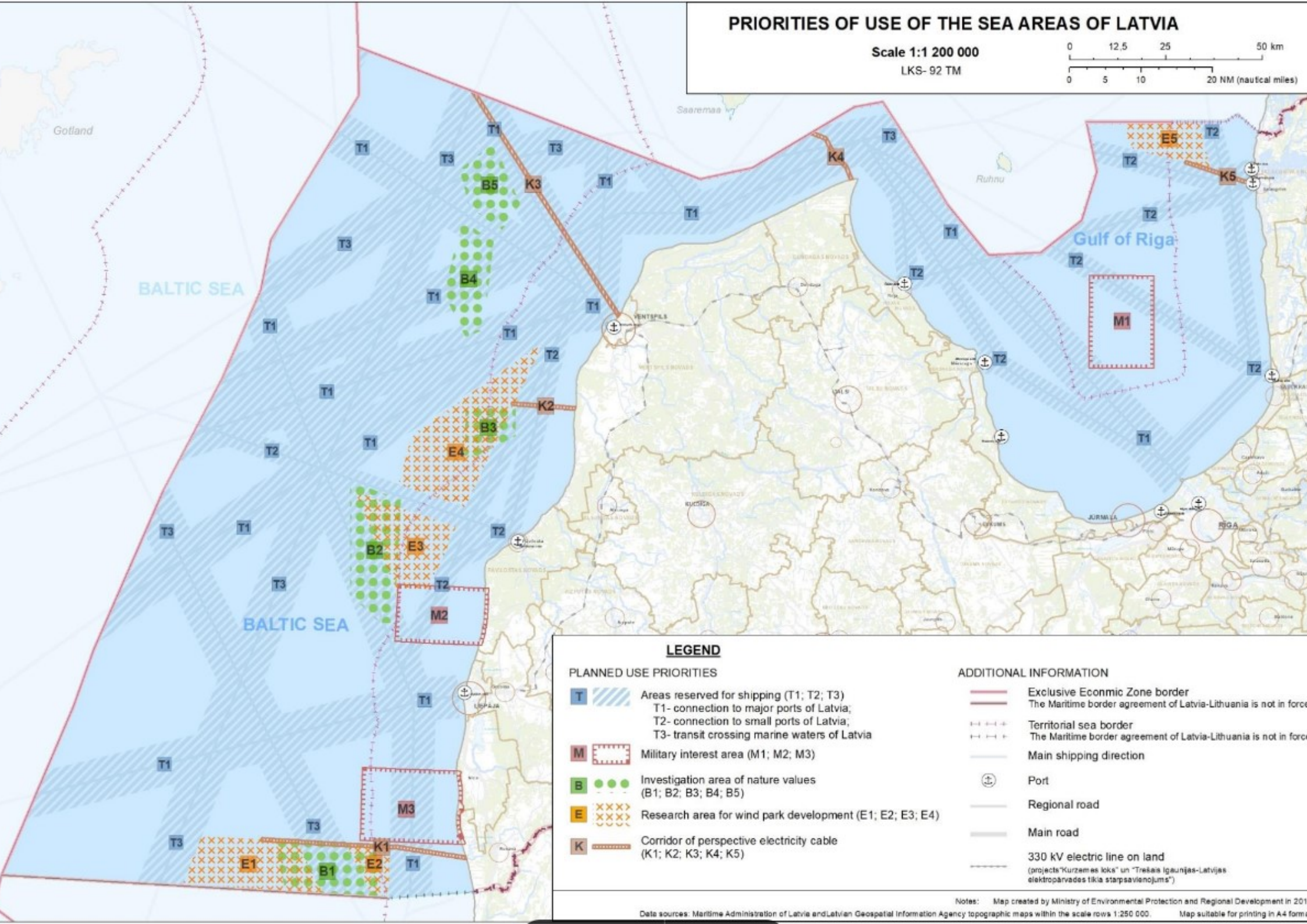
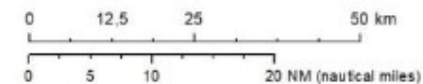


# PRIORITIES OF USE OF THE SEA AREAS OF LATVIA

Scale 1:1 200 000

LKS-92 TM



## LEGEND

### PLANNED USE PRIORITIES

- T** Areas reserved for shipping (T1; T2; T3)  
T1- connection to major ports of Latvia;  
T2- connection to small ports of Latvia;  
T3- transit crossing marine waters of Latvia
- M** Military interest area (M1; M2; M3)
- B** Investigation area of nature values (B1; B2; B3; B4; B5)
- E** Research area for wind park development (E1; E2; E3; E4)
- K** Corridor of perspective electricity cable (K1; K2; K3; K4; K5)

### ADDITIONAL INFORMATION

- Exclusive Economic Zone border
- The Maritime border agreement of Latvia-Lithuania is not in force
- Territorial sea border
- The Maritime border agreement of Latvia-Lithuania is not in force
- Main shipping direction
- Port
- Regional road
- Main road
- 330 kV electric line on land  
(projects "Kurzemes loks" un "Trešais Igaunijas-Latvijas elektropārvades tīkla starpsavienojums")

Notes: Map created by Ministry of Environmental Protection and Regional Development in 2011

Data sources: Maritime Administration of Latvia and Latvian Geospatial Information Agency topographic maps within the scale rows 1:250 000.

Map suitable for printing in A4 format